

Installation Manual

FORD PUMA 5DR
FOR-PUMA-5-A



Shades



Side Shades



Port Shades



Tailgate Shades

Fixing Clips



CL-M12 x 4



CL-M02 x 6



CL-M13 x 4



CL-M14 x 1



Installation

FORD PUMA 5DR
FOR-PUMA-5-A

Components Needed



Side Shades



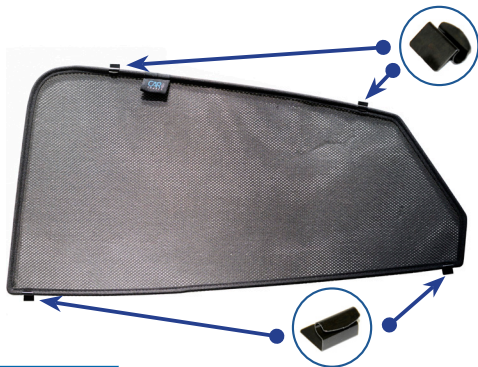
CL-M02 x 4



CL-M13 x 4

Side Shade Installation

STEP 1



STEP 2



STEP 3



STEP 4



STEP 5



STEP 6



Installation

FORD PUMA 5DR
FOR-PUMA-5-A



Side Shade Installation

STEP 7



View from the other side. Ensure clips fit between seals

STEP 8



Repeat this whole process for the other side.

Installation

FORD PUMA 5DR
FOR-PUMA-5-A

Components Needed



Port Shades



CL-M02 x 2

Port Shade Installation

STEP 1



STEP 2



STEP 3



STEP 4



STEP 5



STEP 6



Repeat this whole process for the other side.

Installation

FORD PUMA 5DR
FOR-PUMA-5-A

Components Needed



Tailgate Shades



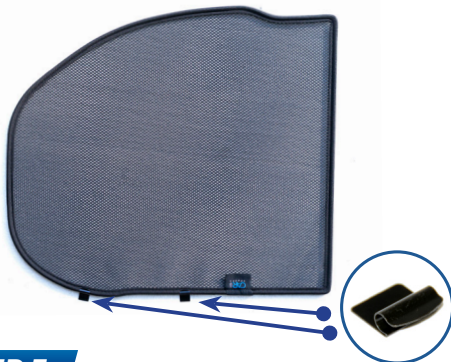
CL-M12 x 4



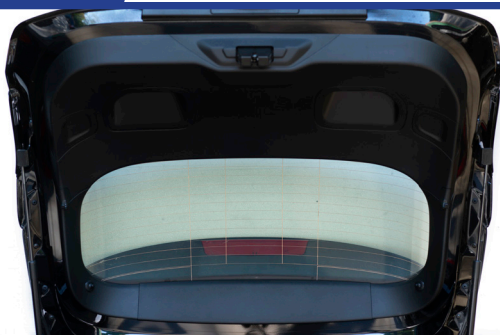
CL-M14 x 1

Tailgate Shade Installation

STEP 1



STEP 2



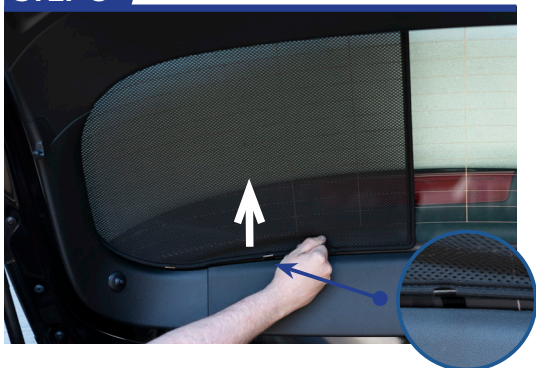
STEP 3



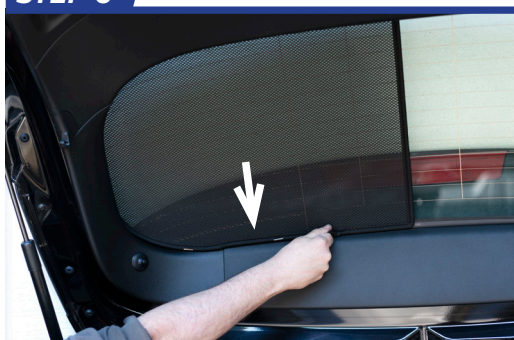
STEP 4



STEP 5



STEP 6



Installation

FORD PUMA 5DR
FOR-PUMA-5-A



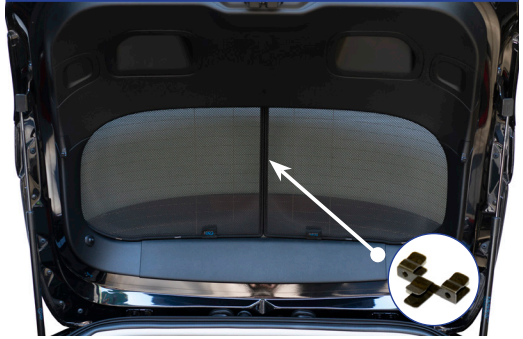
Tailgate Shade Installation

STEP 7

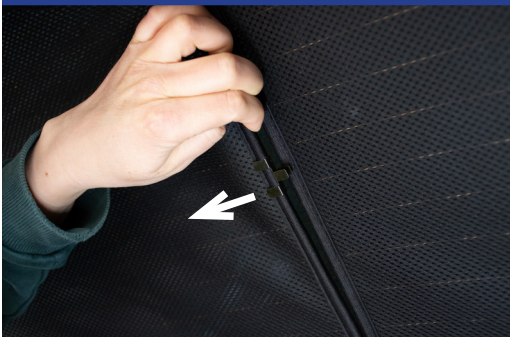


Repeat this whole process for the other side.

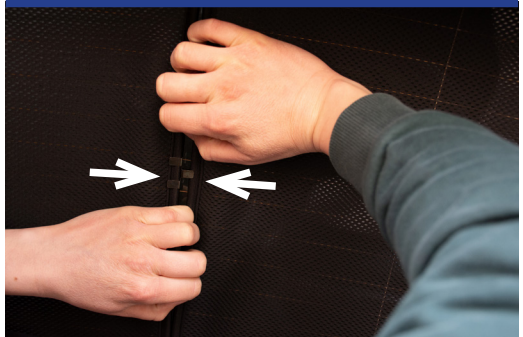
STEP 8



STEP 9



STEP 10



STEP 11

